

A M E R I C A N L A F R A N C E

# RESCUEMASTER® WALK IN



## RESCUE

*The interior layout of the Walk In Rescue provides not only exacting storage considerations but the temperature controlled environment also assures ideal on scene rehab conditions.*

- Individualized assessment to develop your custom apparatus requirements
- Proprietary designed aluminum extrusions provide optimum durability and safety
- Heavy-Duty compartment floor construction supports loads up to 750 lbs
- High-strength 3/16" aluminum body panels, also available in 12 gauge 304L stainless steel

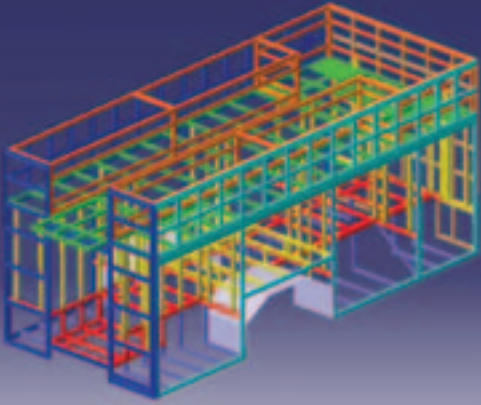
- Aluminum bodies certified to meet AMD001 Static Load Testing
- Self-supporting integral sub-frame design provides maximum strength
- Bodies available with rooftop compartments and recessed storage
- Three door cab design for custom command area applications
- Optional walkthrough with raised roof for interior headroom up to 81"
- Models available for the full range of Light, Medium and Heavy-Duty applications



[WWW.AMERICANLAFRANCE.COM](http://WWW.AMERICANLAFRANCE.COM)

A M E R I C A N L A F R A N C E

## RESCUEMASTER® WALK IN



Self-supporting integral sub-frame design provides maximum strength



Easy access interior walkthrough available from cab to rescue body



Ergonomically enhanced custom cab



User friendly technology such as rear cameras for easier maneuverability



Multiple deep body compartments for maximum storage

These are the typical specifications for the RescueMaster® Walk In:

**PRODUCT CAPABILITIES:** Full use rescue, paramedic-rescue, trench rescue, hazardous materials response, command, mass casualty or law enforcement designs. Generous compartment space permits adaptation to structural fire fighting, investigation, and mass casualty or EMS duty. Flexible interior space can be customized to meet exacting customer requirements. Designed for future equipment adaptation within the compartment layouts.

**CHASSIS AVAILABILITY:**

Custom: American LaFrance Eagle®, Metropolitan.  
Commercial: Freightliner M2, Sterling Acterra, Ford® F-550.

**COMMERCIAL CAB CONFIGURATIONS:**

Available in 2-door, 2-door extended or 4-door.

**BODY CONSTRUCTION:** Aluminum extruded body or formed stainless steel to meet your specific application.

The RescueMaster® body incorporates a rear drop frame, which fully supports the rear step.

Uni-strut shelf tracking fully supported to carry the maximum amount of weight on adjustable shelves and roll-out trays for maximum capacity.

Configurations with the upper catwalk area include a recessed light tower area and integrated roof compartments.

Safety is first and foremost with 3-point transitions from the rear entry ladder to the catwalk area with a structured transition.

Choice of roll-up or hinged doors for compartment storage.

**COMPARTMENT INTERIOR FINISH:**

Aluminum Body: Aluminum diamond plate.

Stainless Steel Body: 12 gauge stainless steel panel.

**For your nearest American LaFrance dealer, call 1-888-253-8725.**

Some specifications and features shown or mentioned in this brochure are optional and are available upon request at extra cost. Specifications are subject to change without notice. American LaFrance is ISO 9001 and 14001 certified. ©2005 American LaFrance, LLC. NOTE: American LaFrance is a registered ISO 9001 and 14001 manufacturer for Class 7 and Class 8 fire apparatus.



[WWW.AMERICANLAFRANCE.COM](http://WWW.AMERICANLAFRANCE.COM)